

A

B

C

D

1

1

2

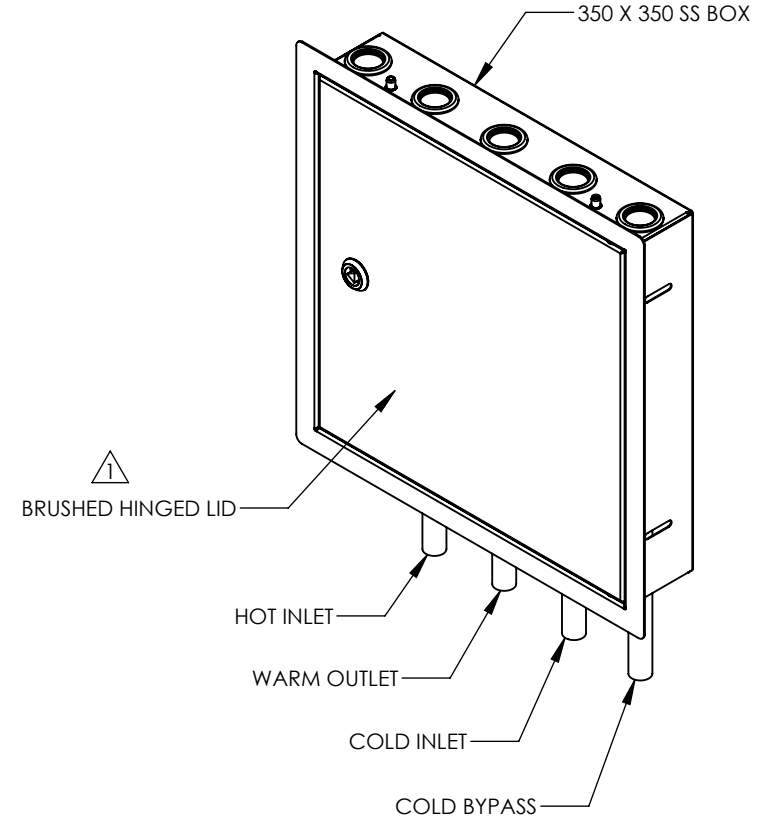
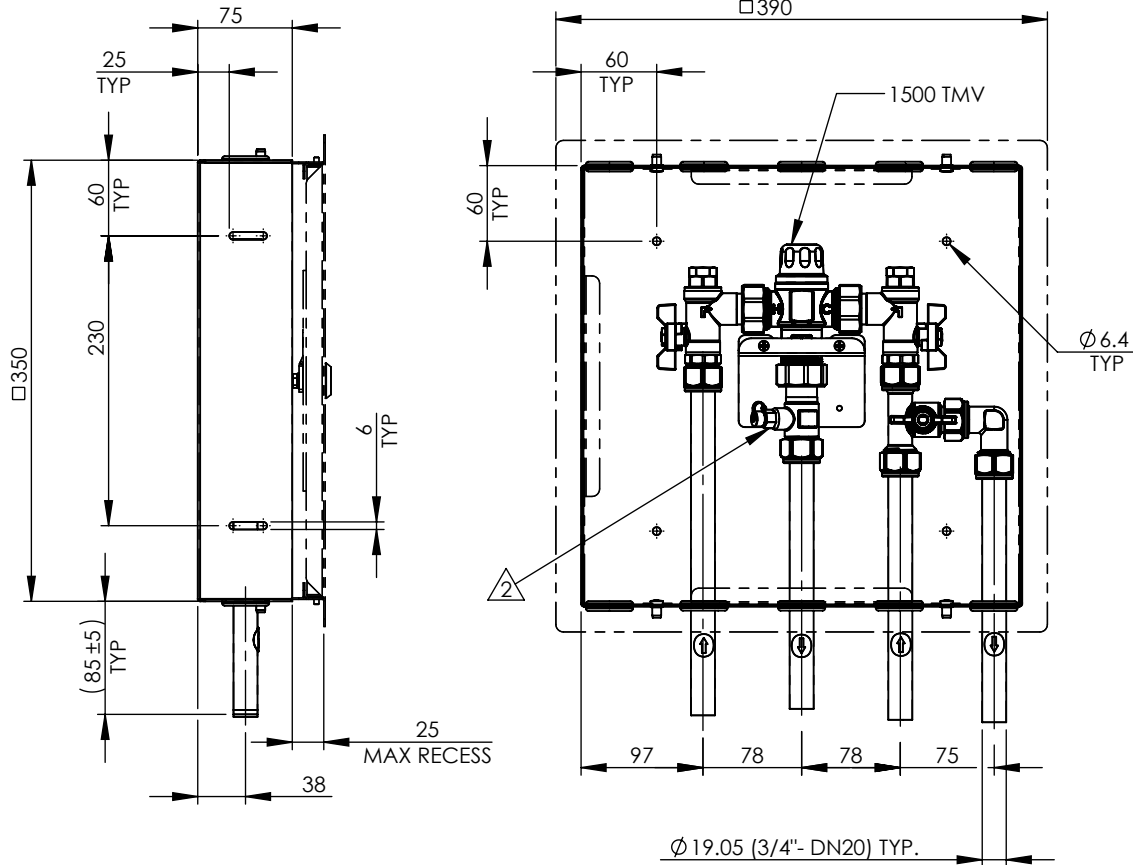
2

3

3

4

4



NOTES:-

- 1 ROTATE LID AND FRAME 180° FOR LEFT HAND OPENING.
- 2 PROBE FOR TEMPERATURE PROVISION.



GENERAL NOTES:
 - DIMENSIONS ARE IN mm's
 - DO NOT SCALE OFF DIMENSIONS
 - TAPWARE TOLERANCE / 2 (EXCEPT WHERE STATED)
 - SAFETY SANITARY AND CARE TOLERANCE / 5 (EXCEPT WHERE STATED)

This drawing is the property of Enware Pty Ltd and may not be reproduced in full or part without the written consent of Enware.

DRAWN	GG
CHECKED	MP
APPROVED	LR



9 Endeavour Rd, Caringbah, NSW, 2229 Ph. 1300 369 273 Email: info@enware.com.au

DRAWING NUMBER: ATMS719H-350	REV: D.0
DESCRIPTION: AQ 1500 S/S CAB W/ CW BYPASS HINGED LID	
FINISH:	SIZE: A4 SCALE: 1:6

A

B

C

D