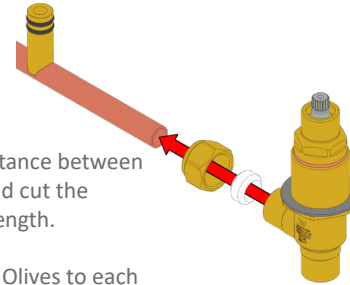


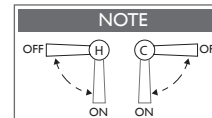
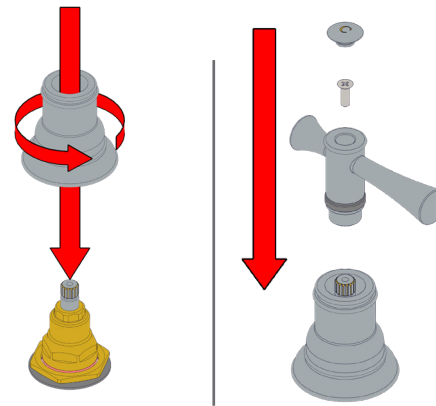
**1**

- Measure centre distance between holes in Basin Top and cut the T-Piece to required length.
- Fit Nuts and Plastic Olives to each end of the T-Piece, connect to the Tap Bodies and fasten Nuts.



**3**

- Firmly Tighten the Dress Plates to Tap Bodies.
- Ensure that both Taps are in the closed position.
- Push the Handle Assembly onto Spindle
- Tighten Handle Screw securing Handle Assembly
- Push the Handle Cap into place. Ensure correct orientation



**2**

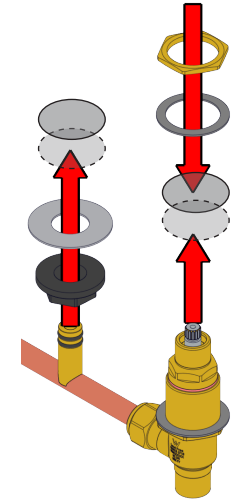
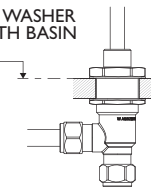
- Push Assembly up through the holes in the Basin Top.

- Fasten Locknuts.

**PLEASE NOTE**

Adjust the Top and Bottom Locknuts to ensure the Red Fibre Washer sits flush with Basin surface as shown:

RED FIBRE WASHER FLUSH WITH BASIN SURFACE

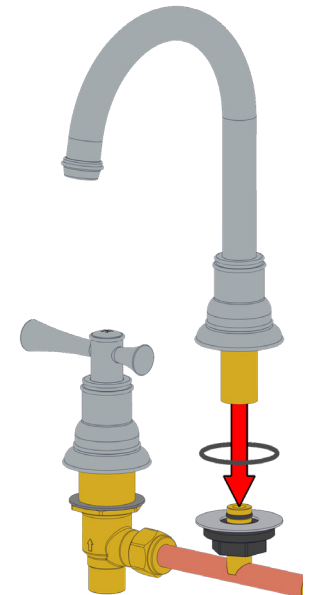
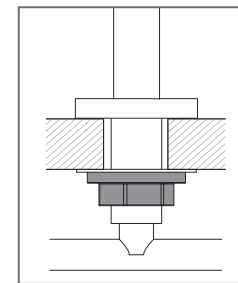


**4**

- Push Spout onto T-Piece.

- Firmly fasten Spout Locknut underneath Benchtop.

- Connect to water supply. Test and check for leaks.



recommended working pressure

**150-500kPa**

maximum hot water temperature



**75 degrees**

**NOTE:**

- If the pressure exceeds or is likely to exceed 550kpa, an approved pressure limiting device must be installed.
- Flush out all pipe work prior to installation.
- If the water temperature exceeds 75°C, an approved tempering valve must be fitted.
- Installation should comply with Australian standard AS3500.1 or relevant local authority requirements. Showers may not be suitable for use within:
  - Gravity-fed water systems
  - Some instantaneous hot water systems; or

- Pressure supply less than 150kPa; NOTE: The 500kPa maximum water supply pressure does not apply to fire service outlets.

Any flow controller incorporated in the outlet to be tightened to prevent removal by hand. As Per AS3718

Failure to comply with the above may void all warranties.

**WARRANTY:**

Please refer to the full warranty statement enclosed with the product before installing.

**MAINTENANCE AND CARE:**

- Chrome plated surfaces should be cleaned with mild liquid detergent or soap and water.
- Do not use cream cleaners or citrus based cleaning products, as they are abrasive.
- Use of unsuitable cleaning agents may damage the surface. Any damage caused in this way will not be covered by warranty.

**DISCLAIMER:**

While we aim to ensure the specifications shown are correct at the time of printing, we reserve the right to make modifications without prior notice. Always use the physical product measurements for mark-ups and roughing-in as the line drawing shown may differ from the actual product over time.

\*All measurements are shown in millimeters.