

# GRAB RAILS & BACK RESTS



## MLR112\_SS

90° Ambulant Grab Rail 450x450mm

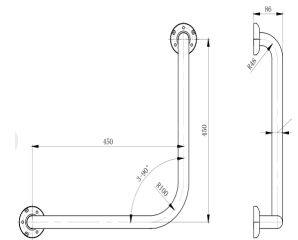
### Specification

Material	#304 Stainless Steel - 32mmØ
Finish	Satin Stainless Steel
Mounting	Concealed Fix - 78mmØ Mount
Also Available	<a href="#">MLR112_DESIGNER</a> : Designer Matte Black <a href="#">MLR112_ANMB</a> : Antimicrobial
Notes	Suits Right Hand or Left Hand installation

\* This unit is ambulant compliant when installed in accordance with AS1428.1. guidelines.

\* It is the responsibility of the installer to ensure that the surface/substrate that the unit is installed upon and the fixings used are suitable to withstand the weight bearing loads of the unit and if required as per AS1428 / Australian building code regulations.

\* Compliant with the Force Requirements within AS1428.1: 2021, Section 14.



### Downloads & Resources

Care & Maintenance  
Installation instructions  
Revit  
Associated Videos  
Stainless Steel Cleaning & Maintenance

*The photographs and line drawings of the products presented above are representational only. Metlam Australia Pty Ltd reserves the right to, and from time to time, make changes and improvements in design and dimensions.*

