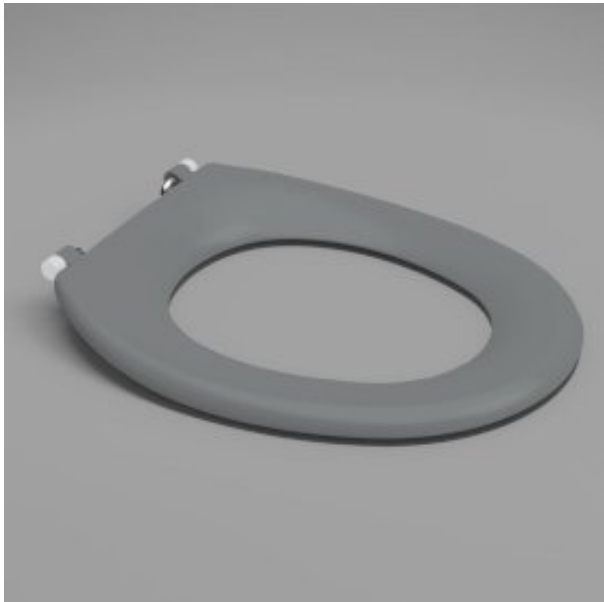


The below products have been shared with you through the Caroma Specify website.  
Visit [specify.caroma.com.au](http://specify.caroma.com.au) to find more inspirational and innovative bathroom products.



### CAROMA

#### CARAVELLE CARE SINGLE FLAP TOILET SEAT ANTHRACITE GREY WITH GERMGARD®

A specialised seat available in single or double flap versions designed for accessible installations. Includes solid stainless steel hinges, plus rotatable buffers for extra stability during sideways transfer.

- Now with GermGard® Protection - Solid section, injection moulded PP seat - Single or double flap - Solid stainless steel hinges - Rotatable buffers - Suitable for Care installations, domestic use or heavy duty commercial use - Suitable for bariatric applications in accordance with AS1371:2016 - Seat available in Sorrento Blue(SB), Anthracite Grey(AG) or White(W)

#### PRODUCT CODES

254007AG Caravelle Care Single Flap Toilet Seat Anthracite Grey with GermGard® \$317.27\*

