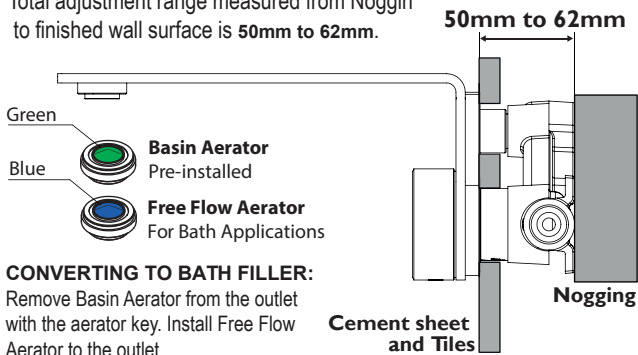
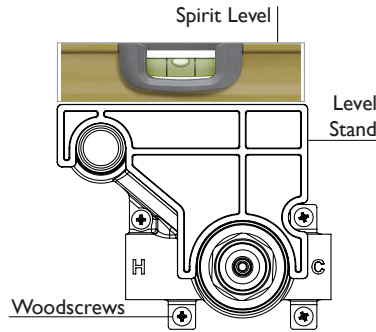


BREACH SET-UP:
Total adjustment range measured from Noggin to finished wall surface is 50mm to 62mm.

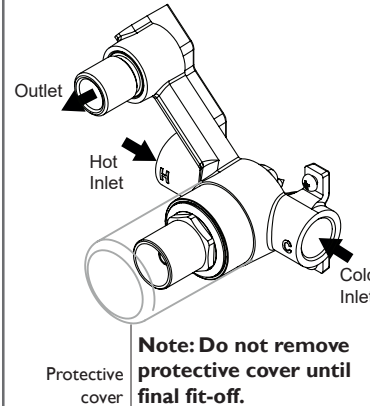


CONVERTING TO BATH FILLER:
Remove Basin Aerator from the outlet with the aerator key. Install Free Flow Aerator to the outlet.

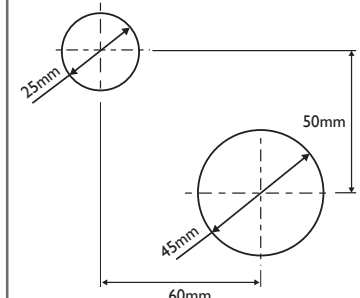
1 Remove the protective cover.
Mount Breach Assembly in place with the wood screws provided and ensure that Breach Assembly is level using a spirit level.



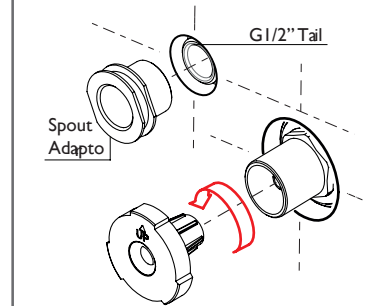
2 Place the protective cover over Breach Assembly.
Connect hot and cold water supplies. **Test and check for leaks.**



3 Create a 45mm diameter hole and a 25mm diameter hole in the finished wall surface as shown.

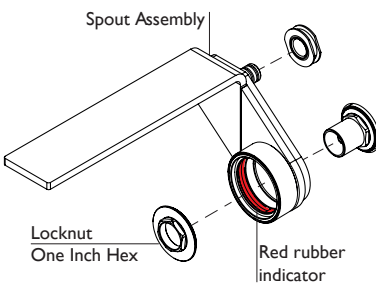


4 Screw the spout adaptor firmly onto the G1/2" tail. Remove the protective cover.
Turn the spindle Anti-Clockwise with Spindle Adaptor until the cartridge is set to OFF position. Remove Spindle Adaptor.

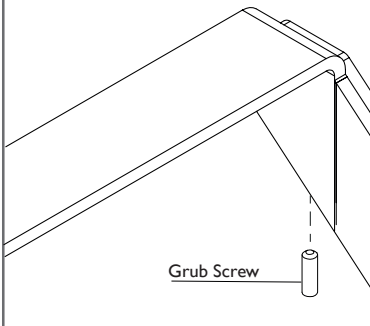


5 Place the spout assembly into position, ensuring that the spout shaft fits snugly into the G1/2" tail.

Secure Spout Assembly by tightening Locknut with a 1" Hex tube spanner. Remove Red Rubber Indicator.



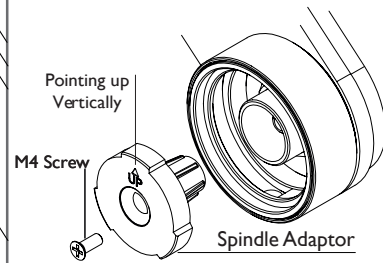
6 Fasten Grub Screw to lock the spout assembly to the spout adaptor.



7 Fit Spindle Adaptor onto the cartridge spindle, ensuring that "UP" arrow points vertically upward.

Secure Spindle Adaptor with M4 Screw provided.

Turn Spindle Adaptor Anti-Clockwise using pliers until the cartridge is set to OFF position.

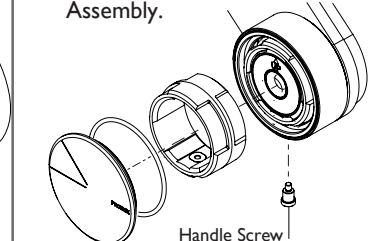


8 Fit Spindle Sleeve over the spindle adaptor.

Tighten Handle Screw to secure Spindle Sleeve.

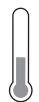
Ensure an O-Ring is attached to Front Cover. Apply some grease or soapy water to the O-Ring if necessary.

Push Front Cover into Handle Assembly.



recommended working pressure
150-500kPa

maximum hot water temperature



75 degrees

NOTE:

- If the pressure exceeds or is likely to exceed 550kpa, an approved pressure limiting device must be installed.
- Flush out all pipe work prior to installation.
- If the water temperature exceeds 75°C, an approved tempering valve must be fitted.
- Installation should comply with Australian standard AS3500.1 or relevant local authority requirements. Showers may not be suitable for use within:
 - Gravity-fed water systems

- Some instantaneous hot water systems; or
 - Pressure supply less than 150kPa;
- NOTE: The 500kPa maximum water supply pressure does not apply to fire service outlets.

Failure to comply with the above may void all warranties.

WARRANTY:

Please refer to the full warranty statement enclosed with the product before installing.

MAINTENANCE AND CARE:

- Chrome plated surfaces should be cleaned with mild liquid detergent or soap and water.
- Do not use cream cleaners or citrus based cleaning products, as they are abrasive.
- Use of unsuitable cleaning agents may damage the surface. Any damage caused in this way will not be covered by warranty.

DISCLAIMER:

While we aim to ensure the specifications shown are correct at the time of printing, we reserve the right to make modifications without prior notice. Always use the physical product measurements for mark-ups and roughing-in as the line drawing shown may differ from the actual product over time.

*All measurements are shown in millimeters.