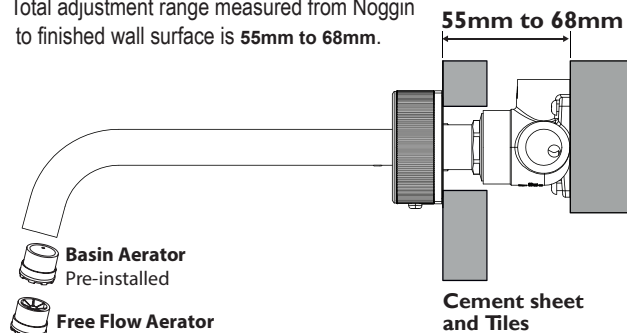


BREACH SET-UP:

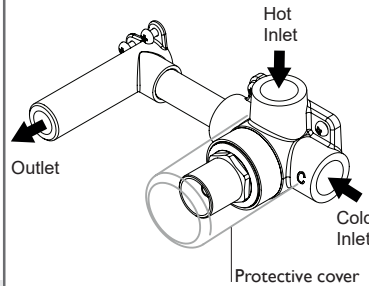
Total adjustment range measured from Noggin to finished wall surface is **55mm to 68mm**.



CONVERTING TO BATH FILLER:

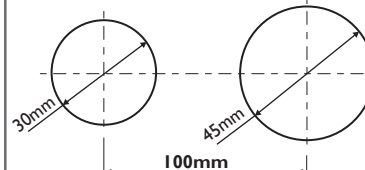
Remove Basin Aerator from the outlet with the aerator key. Install Free Flow Aerator to the outlet.

1 Mount the Mixer Body in place using the wood screws provided. Ensure that Mixer Body is level. Connect hot and cold water supplies. Test and check for leaks.



Note: Do not remove protective cover until final fit-off.

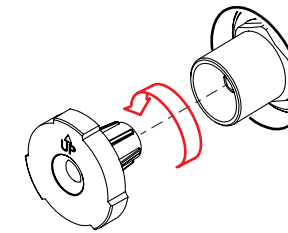
2 Create a 45mm diameter hole and a 30mm diameter hole in the finished wall surface as shown.



3 Remove the protective cover.

Turn the spindle Anti-Clockwise with Spindle Adaptor until the cartridge is set to OFF position.

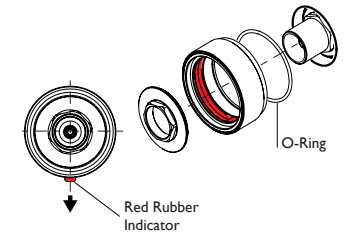
Remove Spindle Adaptor.



4 Fit O-Ring to the base of the handle assembly.

Secure Handle Assembly by tightening Locknut with a 1" Hex tube spanner. Ensure Red Rubber Indicator points vertically downward.

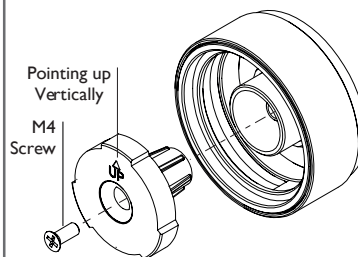
Remove Red Rubber Indicator



5 Fit Spindle Adaptor onto the cartridge spindle, ensuring that "UP" arrow points vertically upward.

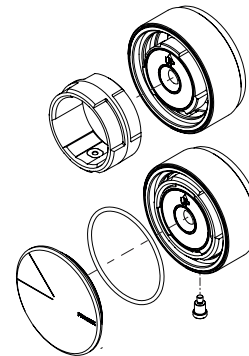
Secure Spindle Adaptor with M4 Screw provided.

Turn Spindle Adaptor Anti-Clockwise until the cartridge is set to OFF position.



6 Fit Spindle Sleeve over the Spindle Adaptor. Tighten Handle Screw to secure Spindle Sleeve.

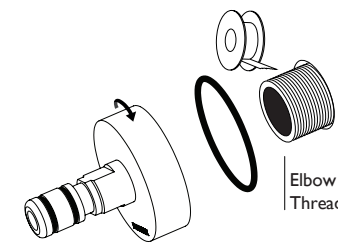
Ensure an O-Ring is attached to Front Cover. Apply some grease or soapy water to the O-Ring if necessary. Push Front Cover into Handle Assembly.



7 Apply teflon tape to the elbow thread.

Ensure that O-Ring is fitted to the spout base.

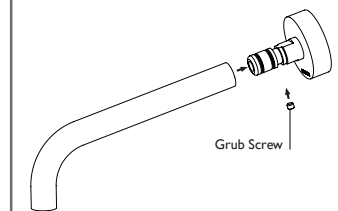
Screw the spout base onto the elbow thread with a spanner.



8 Push the spout onto the spout base.

Fasten Grub Screw.

TEST & CHECK FOR LEAKS

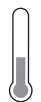


recommended working pressure

150-500kPa

maximum hot water temperature

75 degrees



NOTE:

- If the pressure exceeds or is likely to exceed 550kpa, an approved pressure limiting device must be installed.
- Flush out all pipe work prior to installation.
- If the water temperature exceeds 75°C, an approved tempering valve must be fitted.
- Installation should comply with Australian standard AS3500.1 or relevant local authority requirements. Showers may not be suitable for use within:
 - Gravity-fed water systems

- Some instantaneous hot water systems; or
 - Pressure supply less than 150kPa;
- NOTE: The 500kPa maximum water supply pressure does not apply to fire service outlets.

Failure to comply with the above may void all warranties.

WARRANTY:

Please refer to the full warranty statement enclosed with the product before installing.

MAINTENANCE AND CARE:

- Chrome plated surfaces should be cleaned with mild liquid detergent or soap and water.
- Do not use cream cleaners or citrus based cleaning products, as they are abrasive.
- Use of unsuitable cleaning agents may damage the surface. Any damage caused in this way will not be covered by warranty.

DISCLAIMER:

While we aim to ensure the specifications shown are correct at the time of printing, we reserve the right to make modifications without prior notice. Always use the physical product measurements for mark-ups and roughing-in as the line drawing shown may differ from the actual product over time.

*All measurements are shown in millimeters.